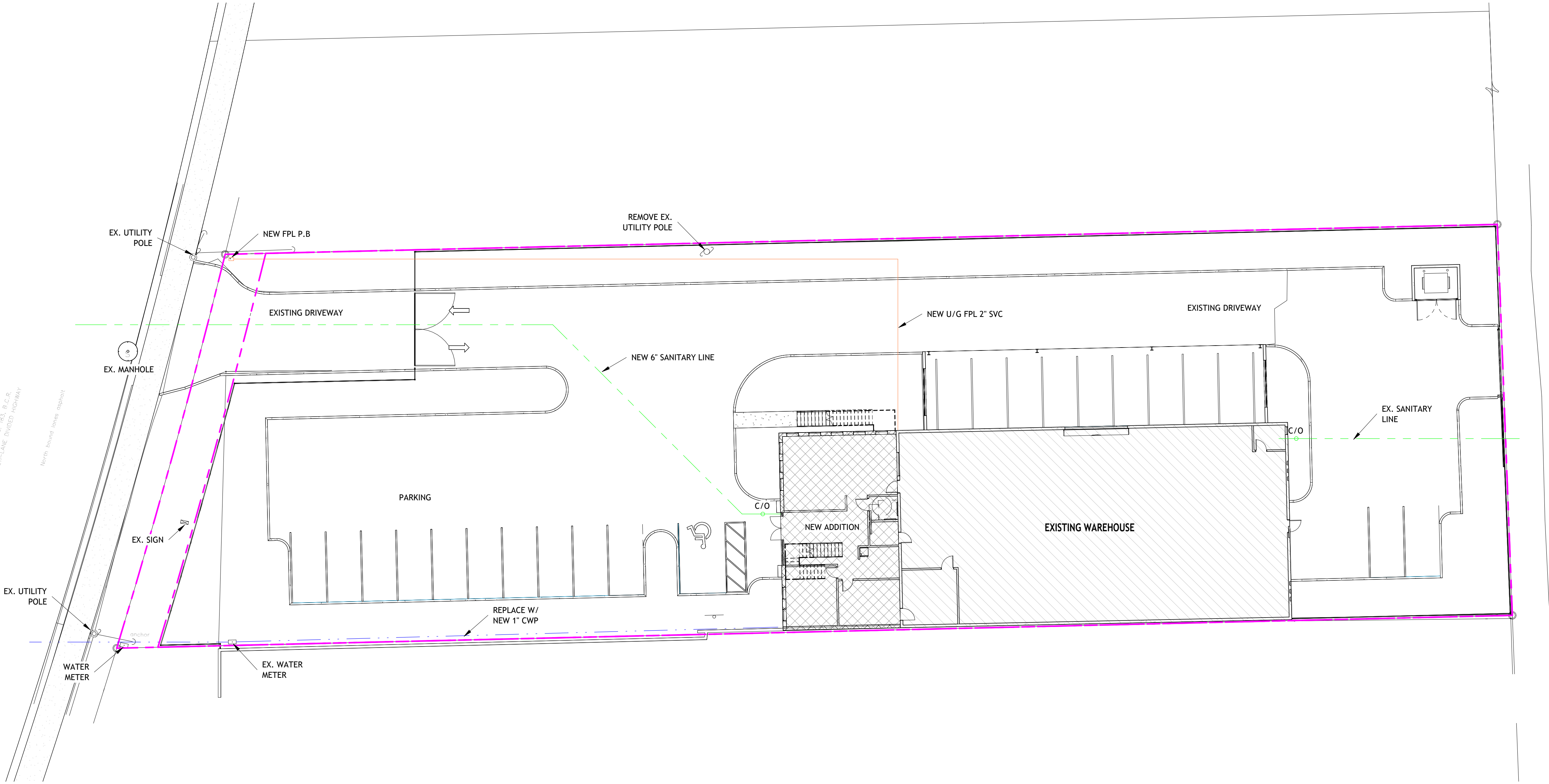


S. ANDREWS AVENUE
SW 12TH AVENUE

P.B. 103, P.O. 88, P.O. 88,
MULTI-LANE DIVIDED HIGHWAY

North Arrow (Not to Scale)



① SITE UTILITY PLAN
1/16" = 1'-0"

AS SHOWN ON THE CITY OF POMPANO BEACH
FLA OFFICIAL RECORD MAP NO. 12
AND THE CITY OF POMPANO BEACH
OFFICIAL RECORD MAP NO. 12

SW 10TH AVENUE
60' RIGHT-OF-WAY

The
Benedict
Bullock
Group, PA
ARCHITECTURE • PLANNING
1525 NW 3RD STREET, SUITE #1
DEERFIELD BEACH, FLORIDA 33442
PHONE (954) 570-9500 FAX (954) 570-9550
www.TBBS.net

FLACK'S WAREHOUSE
1220 SW 12TH AVE
POMPANO BEACH, FL 33060

ARCHITECT'S SEAL

BRIAN BULLOCK,
ARCHITECT AR 95754

DIGITAL SIGNATURE

DATE 6-12-2025

DRAWN BY GG

PROJECT NO. BF2457

C-300
SITE UTILITY
PLAN

DRC

PZ24-12000025

07/16/2025

6/16/2025 6:24:16 PM